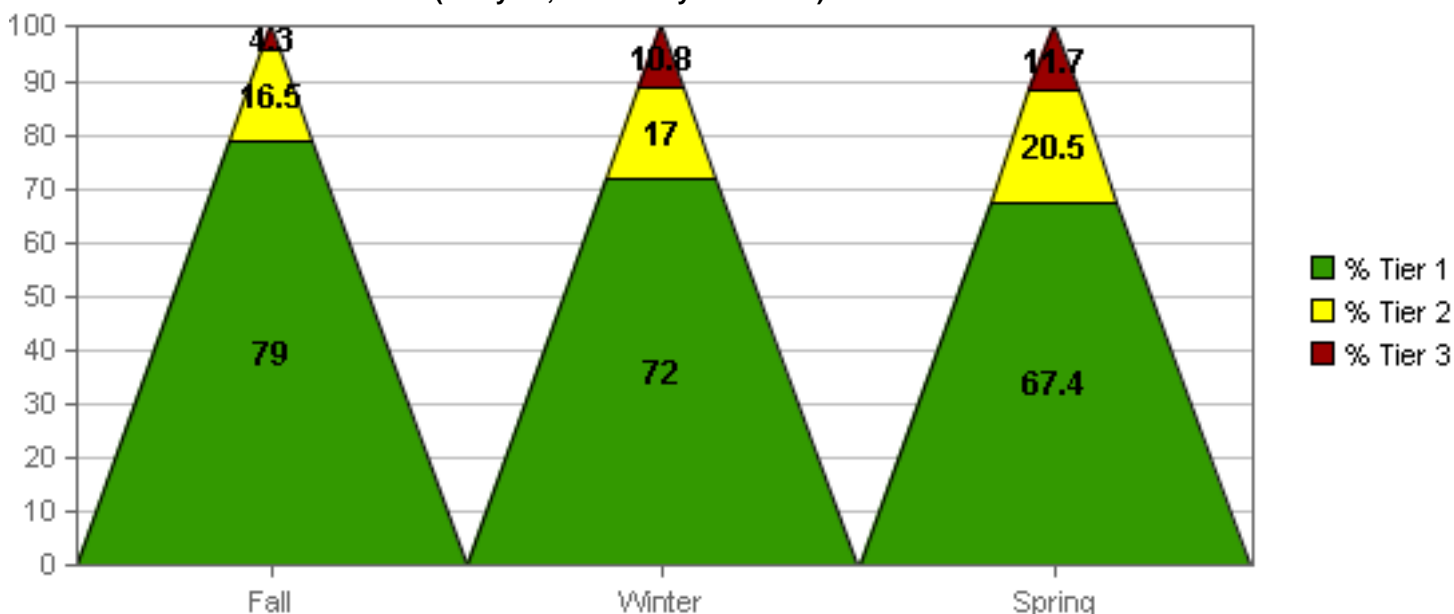


FILTER:
Demographics: Not filtering on demographics

Reporting Method: AIMSweb Defaults - Criterion Referenced

Tier Transition Report
Mason Public Schools - MPS-Mason Middle School
Math Computation
Grade 8 - (Berryhill, Ted - Berryhill Roster) : 2016-2017 School Year



	Fall	Transition	Winter	Transition	Spring
Tier 3	10 (4.3%)	8 1 0	25 (10.8%)	15 8 0	27 (11.7%)
Tier 2	38 (16.5%)	13 19 4	39 (17.0%)	6 21 9	47 (20.5%)
Tier 1	181 (79.0%)	1 19 160	165 (72%)	2 16 144	154 (67.4%)
New Student		9		7	
Unscored		4		8	
Total Students	229		229		228

Note: Unscored also includes any students who may have been transferred.